



go

somewhere

new

THE ALL-NEW 2007 MITSUBISHI OUTLANDER

GO. What is the measure of performance? Dashing to 60 mph on a nice paved track? That's cute. How about enduring a 16-day, 9,000-km journey across the unpredictable and unforgiving African desert, where any one move can change the whole game. For 25 years, Mitsubishi is the only automaker who has taken on, survived—and won, 11 times—the legendary Dakar Rally. From the same quick-thinking, sand-kicking, trophy-hoisting DNA as our Montero Evolution rally vehicle springs the 2007 Outlander. How can something with so much experience be so entirely new? Go figure.



M I V E C T E C H N O L O G Y

Outlander's all-new 220-hp 3.0-liter 24-valve V6 engine is both powerful and fuel-efficient, thanks in part to the Mitsubishi Innovative Valve-timing Electronic Control system. A lightweight aluminum block and oil pan help improve the vehicle's overall balance, for crisper handling.

MIVEC



GO. What is the measure of performance? Dashing to 60 mph on a nice paved track? That's cute. How about enduring a 16-day, 9,000-km journey across the unpredictable and unforgiving African desert, where any one move can change the whole game. For 25 years, Mitsubishi is the only automaker who has taken on, survived—and won, 11 times—the legendary Dakar Rally. From the same quick-thinking, sand-kicking, trophy-hoisting DNA as our Montero Evolution rally vehicle springs the 2007 Outlander. How can something with so much experience be so entirely new? Go figure.



M I V E C T E C H N O L O G Y

Outlander's all-new 220-hp 3.0-liter 24-valve V6 engine is both powerful and fuel-efficient, thanks in part to the Mitsubishi Innovative Valve-timing Electronic Control system. A lightweight aluminum block and oil pan help improve the vehicle's overall balance, for crisper handling.



MIVEC

THE ALL-NEW 2007 MITSUBISHI OUTLANDER

somewhere

new



6-speed



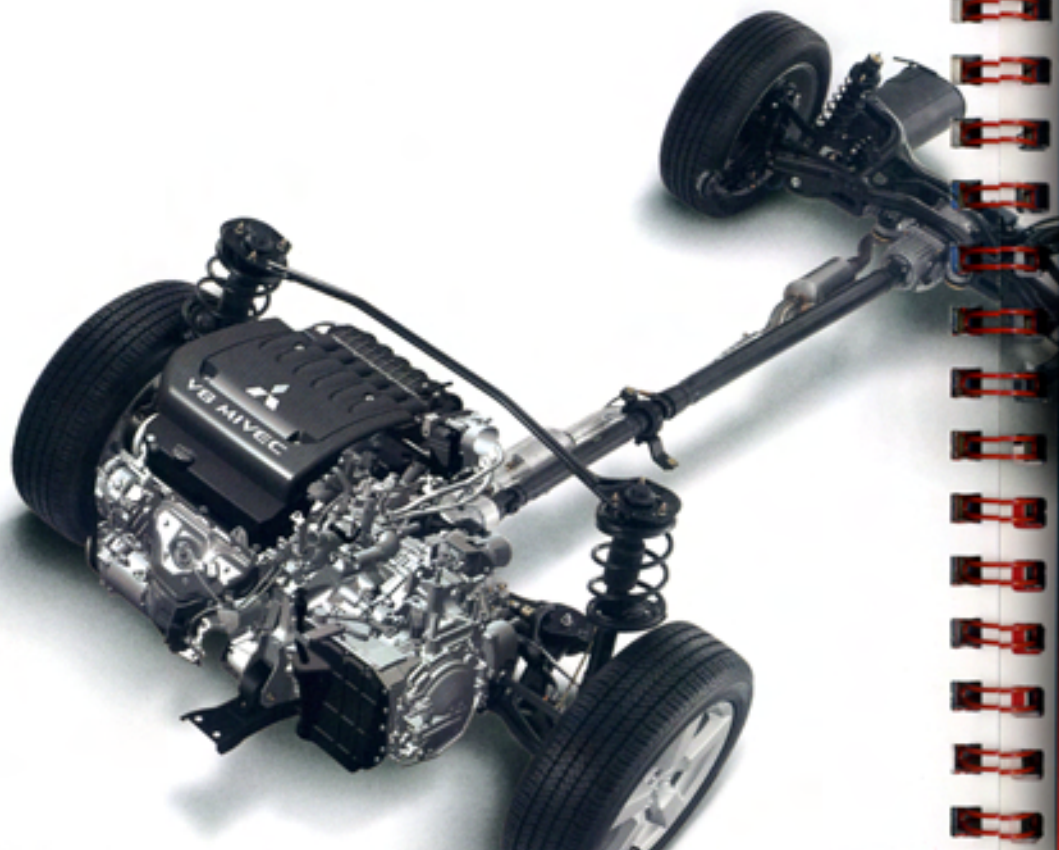
TOUCH AND GO. Standard on every Outlander is a new 6-speed Sportronic® automatic transmission with one-touch manual shifting and adaptive electronics that learn your driving style. Outlander XLS adds rally-inspired **PADDLE SHIFTERS** behind the steering wheel, putting control of upshifts and downshifts at your fingertips whenever you want it. The paddles stay put as you turn the wheel, so control is always where you want it, too.

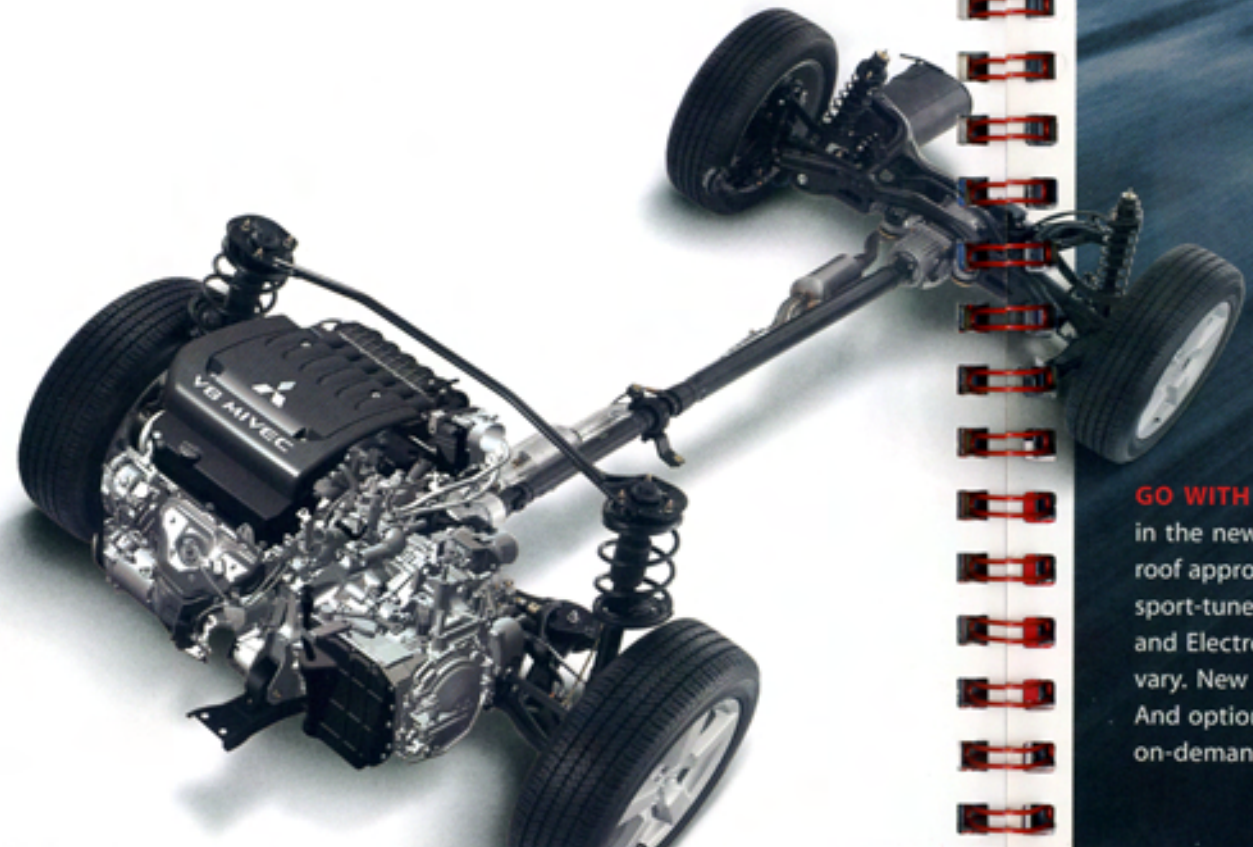


Pre-production vehicles shown with optional equipment, subject to change without notice. Not all equipment is standard on every model.

AWC

All Wheel Control





GO WITH THE FLOW. Nowhere is Mitsubishi's rally-conquering heritage more evident in the new Outlander than in its advanced **ALL-WHEEL CONTROL**, a systematic, road-to-roof approach to handling, traction and stability. A front strut-tower brace augments the sport-tuned 4-wheel independent suspension. Big 4-wheel disc brakes team with ABS and Electronic Brakeforce Distribution for more surefooted stopping as roads and loads vary. New **ACTIVE SKID CONTROL** enhances handling in curves and tire grip on takeoff. And optional 4WD lets the driver dial up any of three modes: 2WD, wheelspin-sensing on-demand 4WD Auto, or 4WD Lock, which sends 50% more torque to the rear wheels.

ALUMINUM ROOF



Outlander's All-Wheel Control philosophy reaches far and high to enhance stability and handling performance. Like the rally-bred high-performance Mitsubishi Lancer Evolution, Outlander uses a lightweight aluminum roof panel that's three times more effective at lowering the vehicle's center of gravity than an aluminum hood.



GO SOMEWHERE. Imagine you're a professional driver, coursing through exotic lands in a competition-prepared Mitsubishi rally car. Each tight corner or cresting hill can surprise you — it actually is a thrill a minute, maybe more. Every move draws you closer to victory, but also closer to your car. And when you find yourself enjoying the ride, you'll have figured it out: What you drive is as important as where you go. Between start and finish lies the entire journey. Between here and there is a lot of somewhere. In the 2007 Outlander, every mile can be somewhere good.



somewhere

new



3

R O W S



NOW WE'RE GETTING SOMEWHERE. Finally, a cockpit not modeled after a hotel lobby or rustic cabin. Outlander's mission is to enjoy the drive. Its modern design is crisp, sporty and filled with **USEFUL INNOVATION**. Front and 2nd-row seats are supportive, multi-adjustable and protected by **SIDE-CURTAIN AIR BAGS**. Every surface provides the satisfying feel of rich materials and refined textures. Outlander XLS even adds a standard underfloor-stowable 3rd-row seat.

FLAP-FOLD TAILGATE



ANYWHERE YOU LIKE. Outlander may come pre-loaded with innovations, but it's wide-open for taking on people and packages, with versatile seating configurations, a flat **ULTRA-LOW LOAD FLOOR** and countless clever storage ideas. And with its new two-piece **FLAP-FOLD TAILGATE**, even Outlander's back end is on the leading edge.



FLAP-FOLD TAILGATE



ANYWHERE YOU LIKE. Outlander may come pre-loaded with innovations, but it's wide-open for taking on people and packages, with versatile seating configurations, a flat **ULTRA-LOW LOAD FLOOR** and countless clever storage ideas. And with its new two-piece **FLAP-FOLD TAILGATE**, even Outlander's back end is on the leading edge.



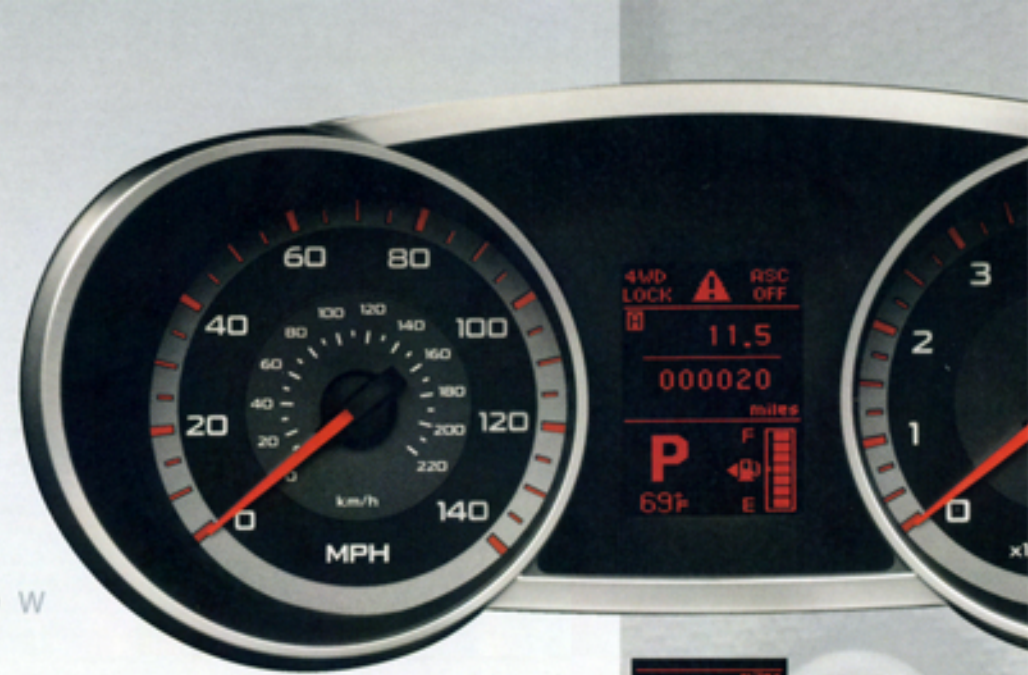
3RD ROW

EVERYWHERE YOU LOOK. Pick a seating row and the new Outlander will show you a surprise. On Outlander XLS, the underfloor-stowable 3rd row offers spontaneous seating for two extra kids after soccer, or disappears without impeding cargo room. The 60/40 2nd-row seats slide, recline, fold and tumble, depending on who or what you're bringing along. The **DEEPLY BOLSTERED DRIVER'S SEAT** reveals a commanding view outside and a reconfigurable command center inside.

2ND ROW



FRONT ROW



Front and center between the deeply hooded, red-illuminated analog gauges, the Multi-Information Monitor lets the driver display eight different types of vehicle information on a backlit LCD screen.



INFO

GO SOMEWHERE NEW. Look at any crossover SUV on the market. Does it seem like everyone else just took a larger SUV and subtracted size and features? We chose a more progressive approach—and it adds up to a vehicle that satisfies when others come up short. Outlander offers the smart size and efficiency you need. The versatility and value you deserve. Plus the inspired performance and innovation you crave. Mitsubishi knows you don't become a champion by following where others go. The only thing you can follow is your passion. Want to go somewhere entirely new? The 2007 Outlander would be thrilled to take you there.



new

THE ALL-NEW 2007 MITSUBISHI OUTLANDER

NEW SOUNDS. By far the most powerful in its class, the optional **ROCKFORD FOSGATE®** audio system pumps 650 watts through nine speakers, including a **PUNCH® 10"** dual-voicecoil subwoofer in a reinforced enclosure. It comes with an MP3-compatible in-dash 6-CD changer plus **SIRIUS SATELLITE RADIO** with a 6-month subscription to its 125+ channels.



650 watts

SIRIUS and the dog logo are trademarks of SIRIUS Satellite Radio.

NEW START. When we say Outlander XLS is responsive, we mean it. A standard **BLUETOOTH®** hands-free cellular phone interface lets you control any compatible mobile phone with your voice. Its advanced **FAST-KEY** access system even responds to your presence, letting you unlock the doors, start the engine and drive off without ever taking the compact key module from your pocket.



NEW LIFE. When it comes to lively performance, Outlander's MIVEC V6 really puts out. When it comes to emissions, it really doesn't. In fact, Outlander is the **FIRST PZEV V6 SUV** ever offered in the U.S. PZEV means Partial Zero Emission Vehicle, the cleanest certification for gasoline-engine vehicles in California and other low-emission states. A PZEV produces fewer emissions while being driven than a typical gasoline car does when it's just sitting there, playing dead.

PZEV



30GB drive

NEW DIRECTIONS. In a class where few vehicles even offer navigation, the optional HDD Navigation and Mitsubishi Multi-Communication System is the new state of the art, with **TOUCH-SCREEN** control and a **30GB HARD DRIVE** for its maps, data and points of interest. Faster-responding than a DVD-based system, its functions include an in-car **MUSIC SERVER** that downloads your CDs as digital files — so you can enjoy your songs anywhere you drive. You can even watch a favorite DVD movie on the 7" screen when you're parked.



THE ALL-NEW
2007 MITSUBISHI
OUTLANDER





THE ALL-NEW 2007 MITSUBISHI OUTLANDER

SPECIFICATIONS

ENGINE

3.0-liter 24-valve V6 with Mitsubishi Innovative Valve-timing Electronic Control system (MIVEC)
Aluminum engine block, cylinder heads and oil pan
Peak output: 220 hp @ 6,250 rpm, 202 lb-ft torque @ 4,000 rpm

DRIVETRAIN

6-speed Sportronic® automatic transmission (with paddle shifters on XLS)
Standard Active Skid Control (ASC) system
Optional 4-wheel drive (4WD) with 3 electronically selected modes: 2WD, wheelspin-sensing 4WD Auto, and 4WD Lock

CHASSIS

4-wheel independent sport-tuned suspension: front MacPherson struts with stabilizer bar and strut tower brace, rear multi-link with coil springs and stabilizer bar
Rack-and-pinion steering with engine-rpm-sensing power assist. 3.16 steering-wheel turns lock-to-lock
Power-assisted 4-wheel disc brakes. 4-channel/4-sensor ABS with Electronic Brakeforce Distribution (EBD)

WHEELS AND TIRES

LS: 16" steel wheels with covers (5-spoke alloy optional)
P215/70R16 all-season tires
XLS: 18" 5-spoke alloy wheels
P225/55R18 performance-rated all-season tires
Standard onboard Tire Pressure Monitoring System (TPMS)

DIMENSIONS

Overall length	182.7 in	Overall width	70.8 in
Wheelbase	105.1 in	Overall height	66.1 in
Cargo volume	39.3 cu ft (with 5 passengers)		
	69.2 cu ft (with all rear seats folded)		
Load-in height	23.6 in (with lower tailgate open)		

1 Air bags can cause serious injury or death to anyone too close to an air bag when it deploys. To decrease the risk of injury from a deploying air bag, all occupants must be properly restrained and seated well back, upright and in the middle of the seat. Do not lean against the door. Always place children 12 and under in the rear seat and use appropriate child restraints. Never place a rear-facing infant restraint in the front seat. See your Owner's Manual and instructions provided with your child restraint for more information.

Pre-production vehicles shown with optional equipment, subject to change. Not all equipment is standard on every model.

Technical data, equipment and options shown are based on the latest information available at the time of printing and are subject to change without notice.

© 2006 Mitsubishi Motors North America, Inc.
mitsubishicars.com/07Outlander 1-888-MITSU2007



THE ALL-NEW
2007 MITSUBISHI
OUTLANDER

Coming Fall 2006



BUSINESS REPLY MAIL

FIRST CLASS MAIL

PERMIT NO. 942

SAN ANGELO, TX 76902

POSTAGE WILL BE PAID BY ADDRESSEE

MITSUBISHI MOTORS NORTH AMERICA INC
PO BOX 60526
SAN ANGELO TX 76906-9967



NO POSTAGE
NECESSARY
IF MAILED
IN THE
UNITED STATES



25
YEARS
IN AMERICA



THE ALL-NEW
2007 MITSUBISHI
OUTLANDER

Coming Fall 2006

mitsubishicars.com/07Outlander
1-888-MITSU2007

NATPL-07-002

THE ALL-NEW 2007 MITSUBISHI OUTLANDER

go somewhere

new